
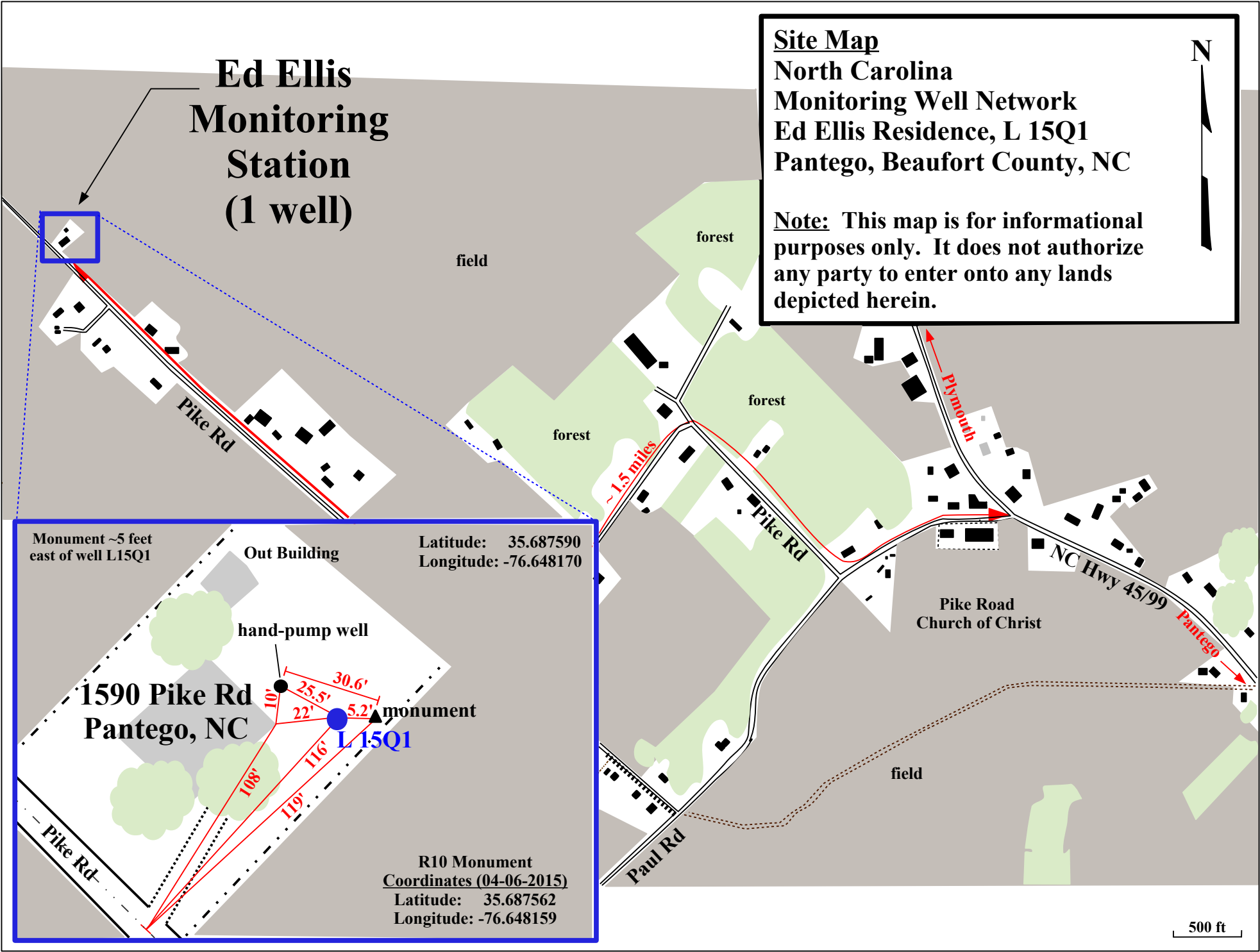


Ed Ellis Monitoring Station (1 well)

Site Map
 North Carolina
 Monitoring Well Network
 Ed Ellis Residence, L 15Q1
 Pantego, Beaufort County, NC

Note: This map is for informational purposes only. It does not authorize any party to enter onto any lands depicted herein.

Monument ~5 feet east of well L15Q1

Latitude: 35.687590
 Longitude: -76.648170

Out Building

hand-pump well

1590 Pike Rd
 Pantego, NC

monument

L15Q1

R10 Monument
 Coordinates (04-06-2015)
 Latitude: 35.687562
 Longitude: -76.648159

Detailed site plan showing the well L15Q1 (blue dot) and monument (black triangle) at 1590 Pike Rd, Pantego, NC. The plan includes an out building and a hand-pump well. Dimensions are provided for various points: 108' from the well to the monument, 119' from the well to the out building, 116' from the well to the hand-pump well, 25.5' from the hand-pump well to the monument, 30.6' from the monument to the out building, and 5.2' from the well to the monument. A scale bar at the bottom right shows 500 feet.